



SAFA

SUSTAINABILITY ASSESSMENT OF
FOOD AND AGRICULTURE SYSTEMS

SALSA Conference

Brussels, 19 March 2014

DANIEL SALTER

SAFA Coordinator

Climate, Energy and Tenure Division

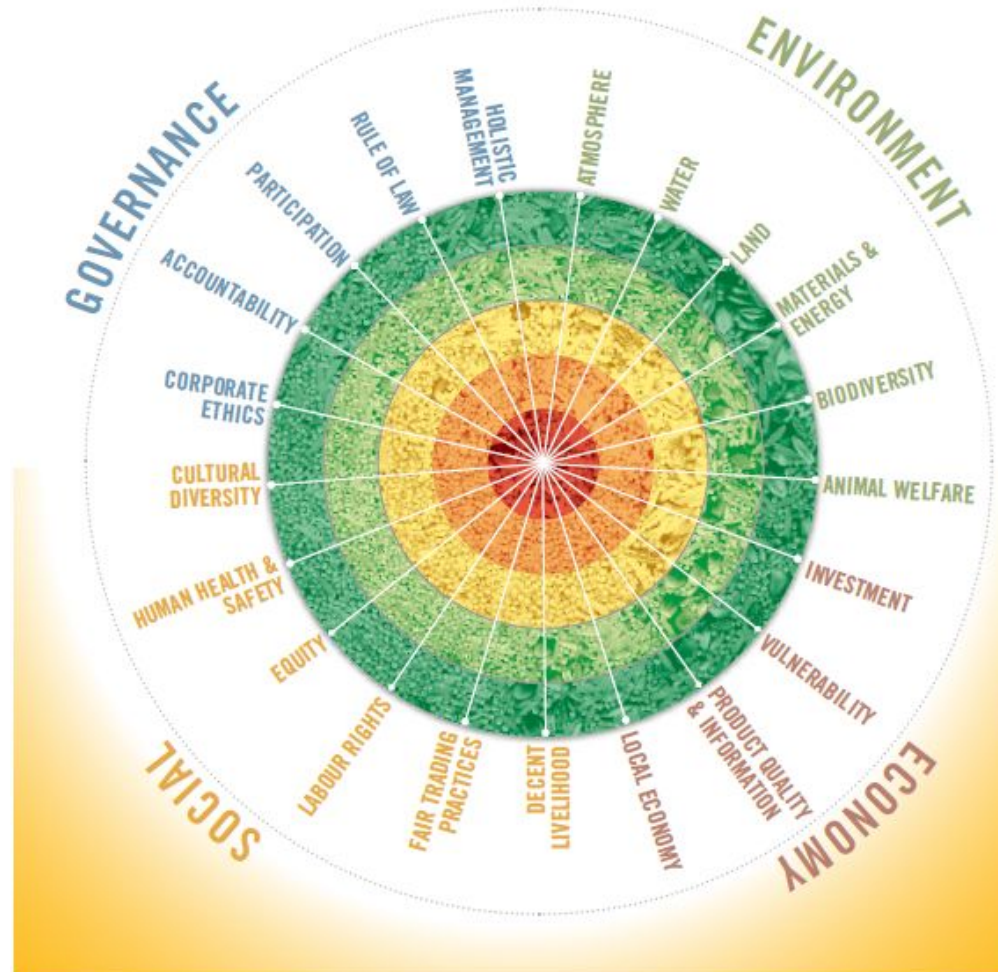


PRESENTATION OVERVIEW

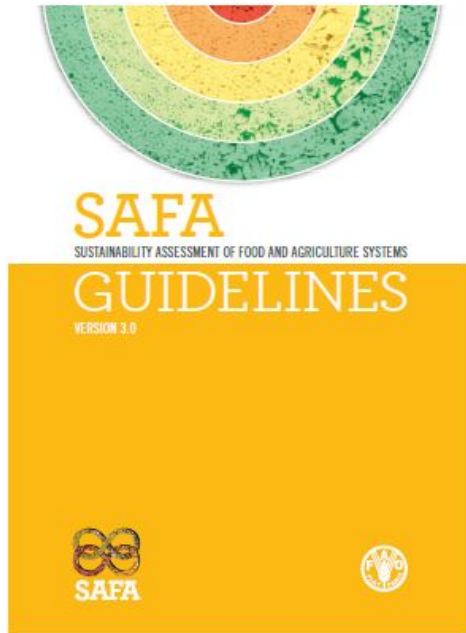
1. What?
2. Why?
 1. When & Where? (SAFA development process)
 2. Who? (SAFA users)
3. How?
4. The SAFA Pathway to Sustainability
5. The SAFA Advantage
6. Future Developments



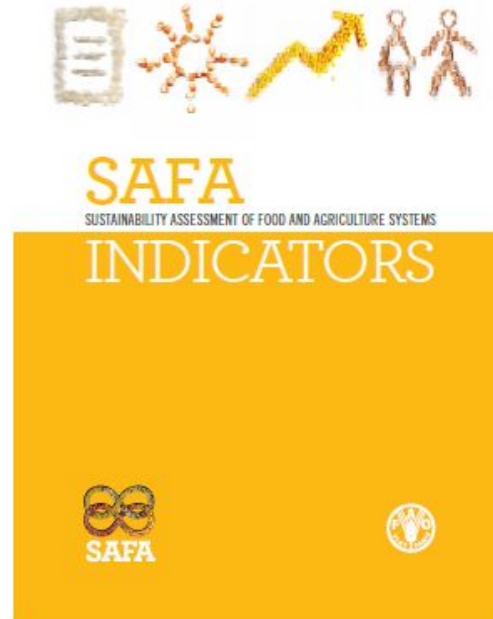
1. WHAT IS SAFA?



The SAFA Series 1, 2, 3....



1. SAFA Guidelines



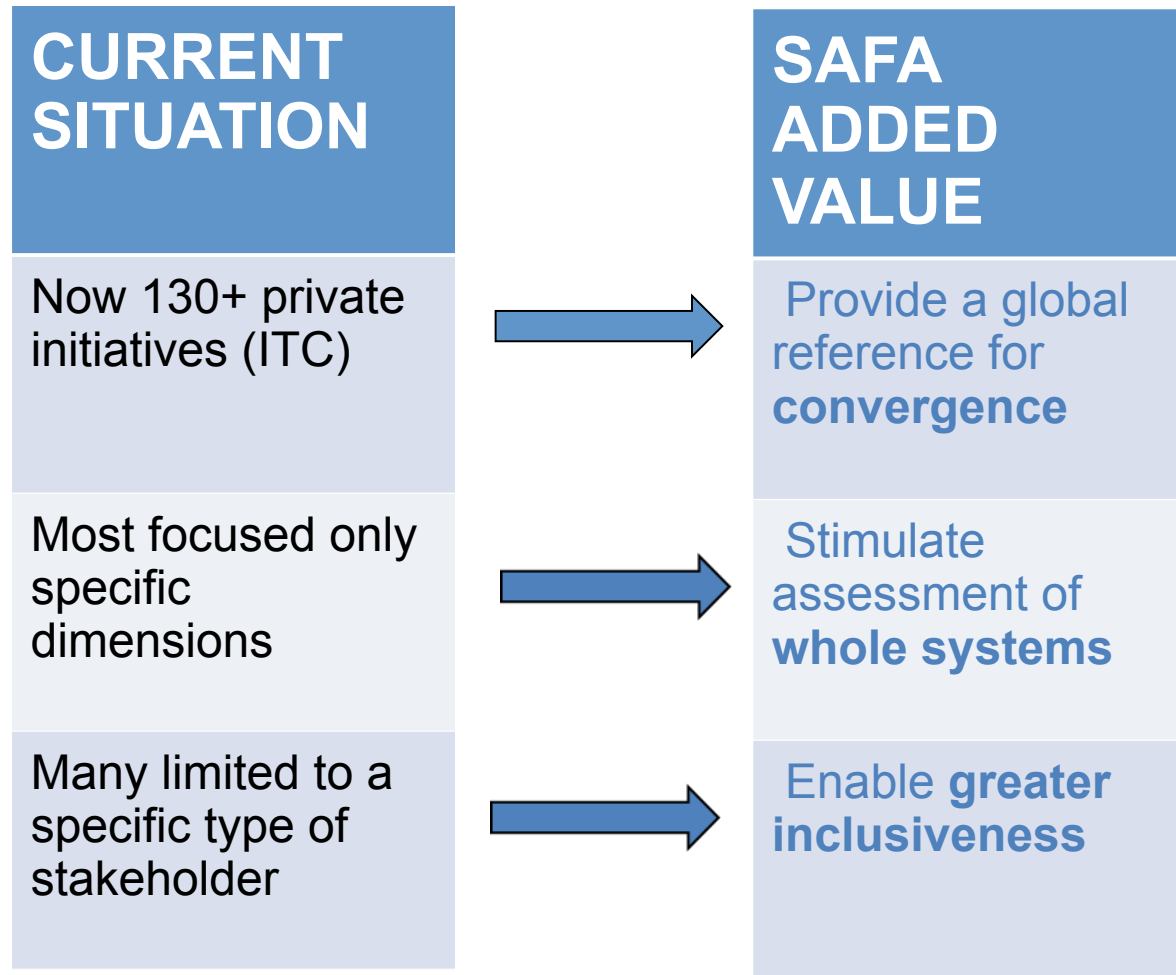
2. SAFA Indicators



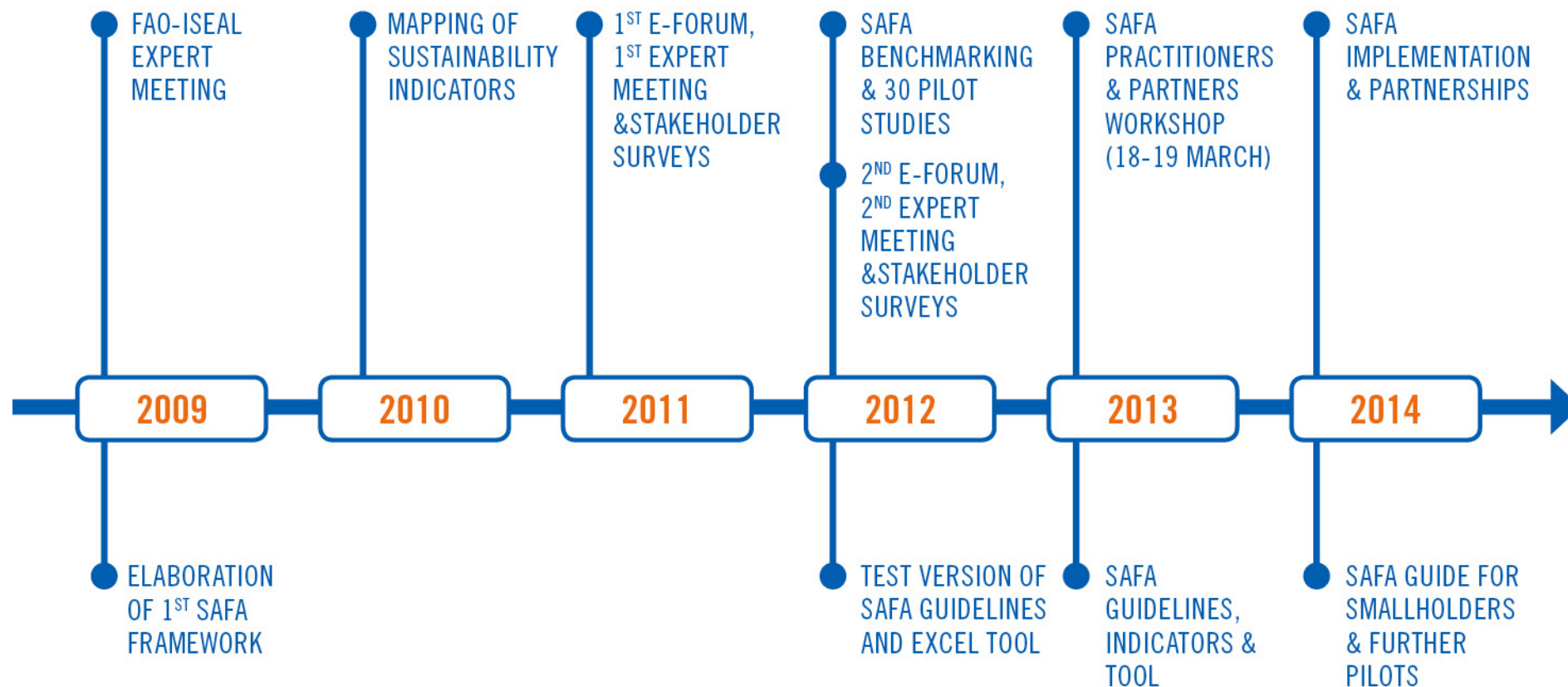
3. SAFA Tool



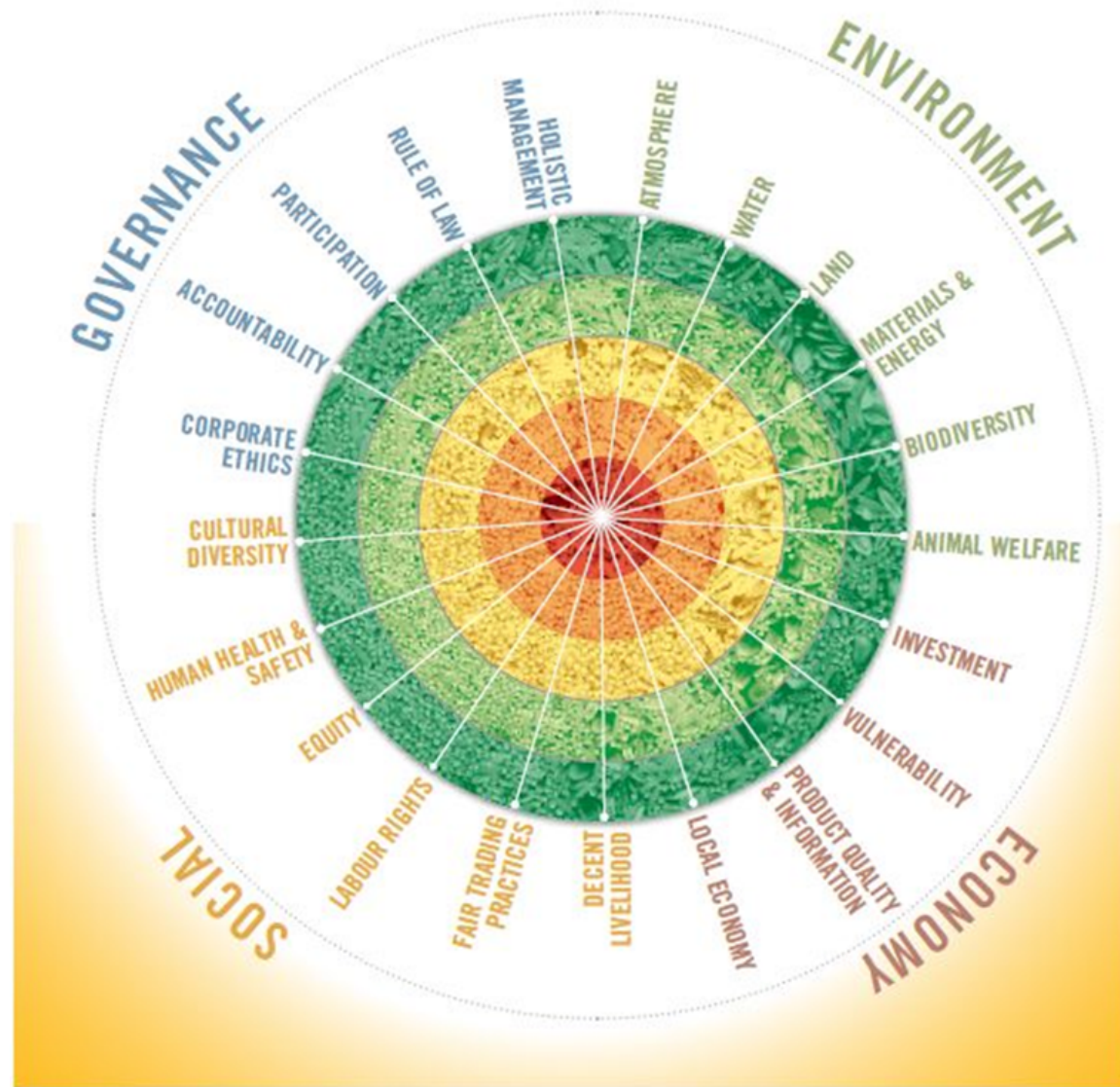
2. WHY SAFA?



3. WHEN AND WHERE WAS SAFA CREATED?

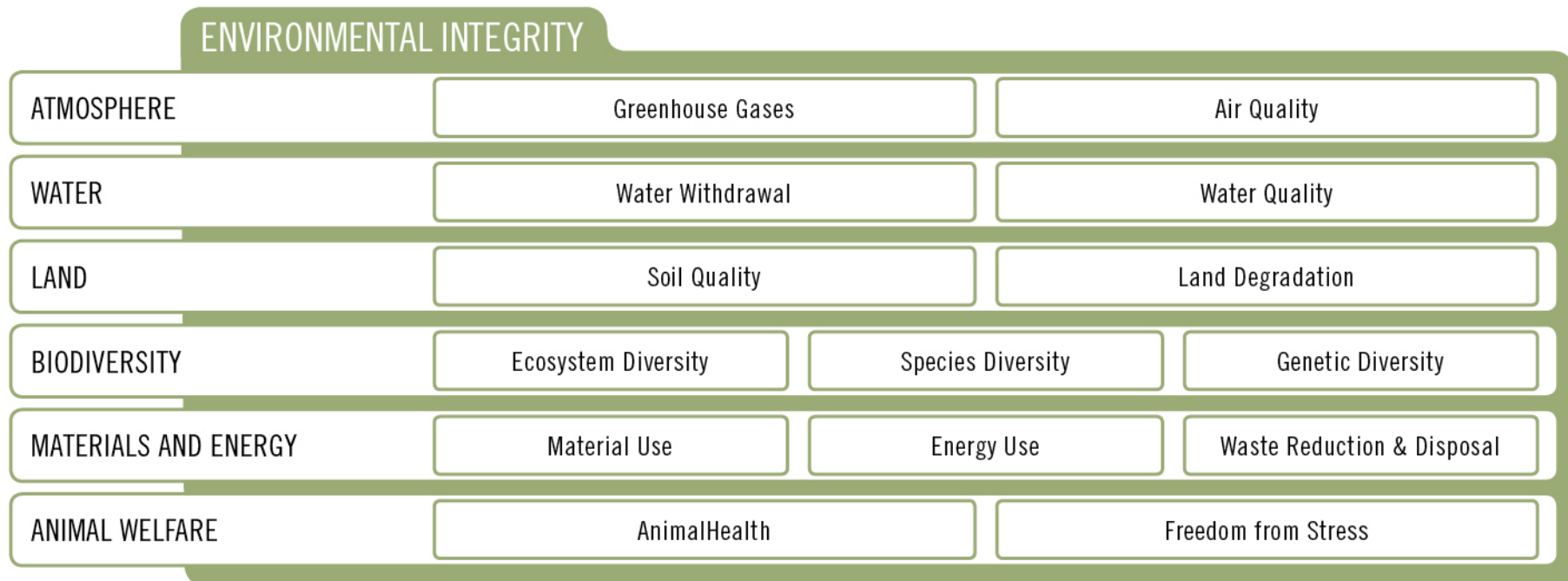


THE SAFA FRAMEWORK PILLARS....



SUSTAINABILITY PILLAR: ENVIRONMENT

6 Sub-Themes; 52 Indicators*



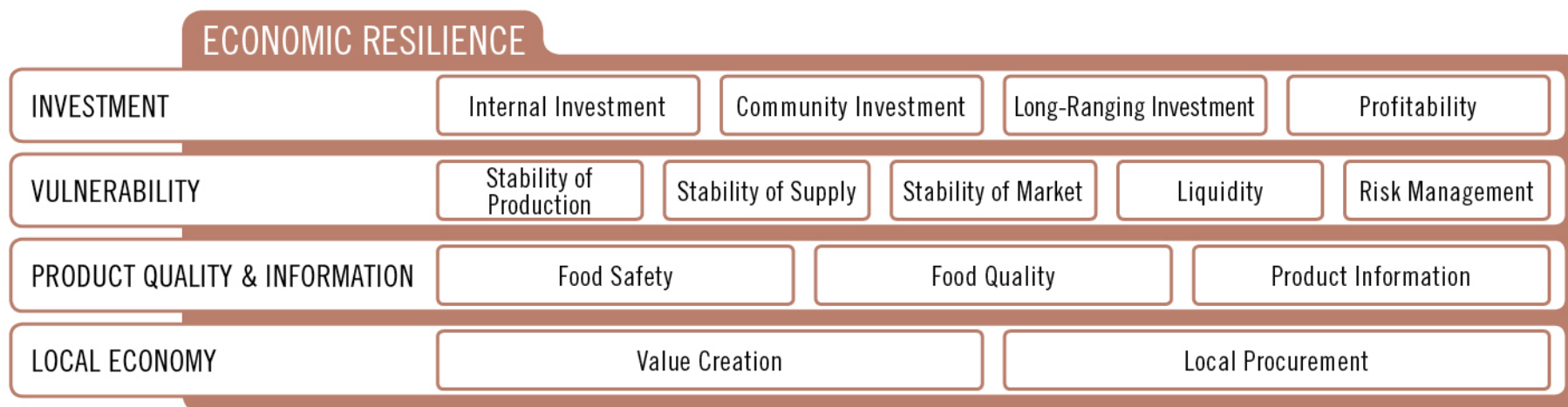
Brings together different methodologies to assess environmental integrity

(i.e. LCA + organic standards)



SUSTAINABILITY PILLAR: ECONOMIC

4 Sub-Themes; 26 Indicators



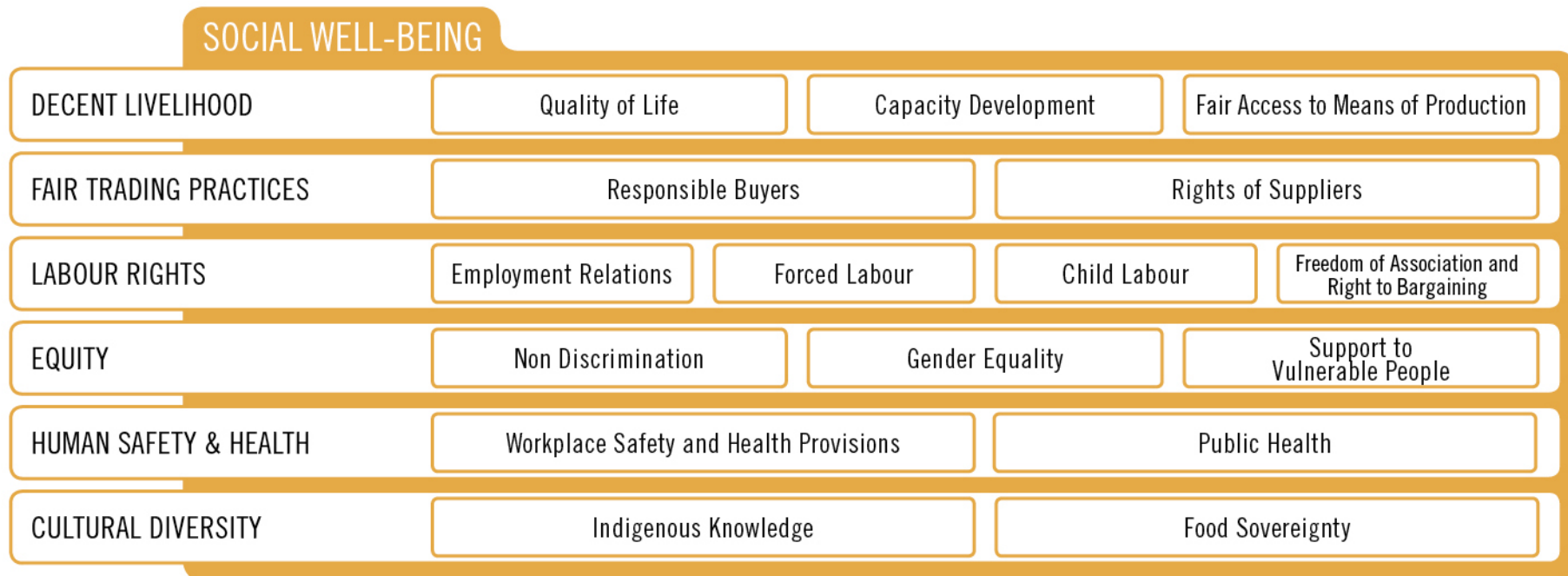
From mere financial and safety schemes to assess economic system resilience

(i.e. Here the concept of local food becomes important for resilience local economies)



SUSTAINABILITY PILLAR: SOCIAL

6 Sub-Themes; 19 Indicators



Based on rights at all levels to assess social well-being

(i.e. Provision of rights for all stakeholders)



SUSTAINABILITY PILLAR: GOVERNANCE

5 Sub-Themes; 19 Indicators

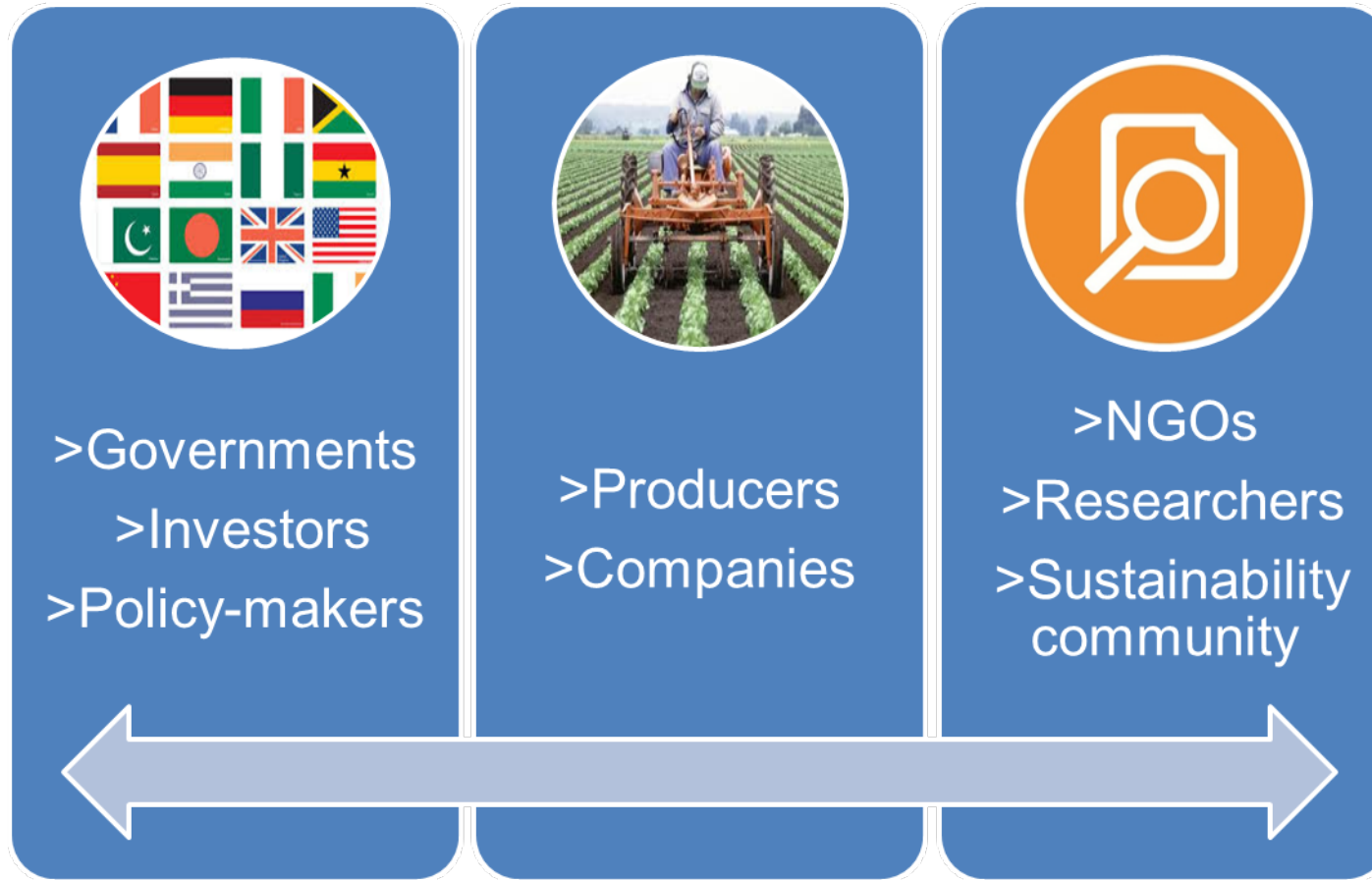


Assess effectiveness of sustainability governance mechanisms

(i.e. Goes beyond CSR reporting)



4. WHO CAN USE SAFA?



A wide range of stakeholders regardless of size, location or role



5. HOW CAN SAFA BE USED?



- >Strategy
- >Policy
- >Goal Setting



- >Self Assessments
- >Hot-spots analysis
- >Benchmarking suppliers



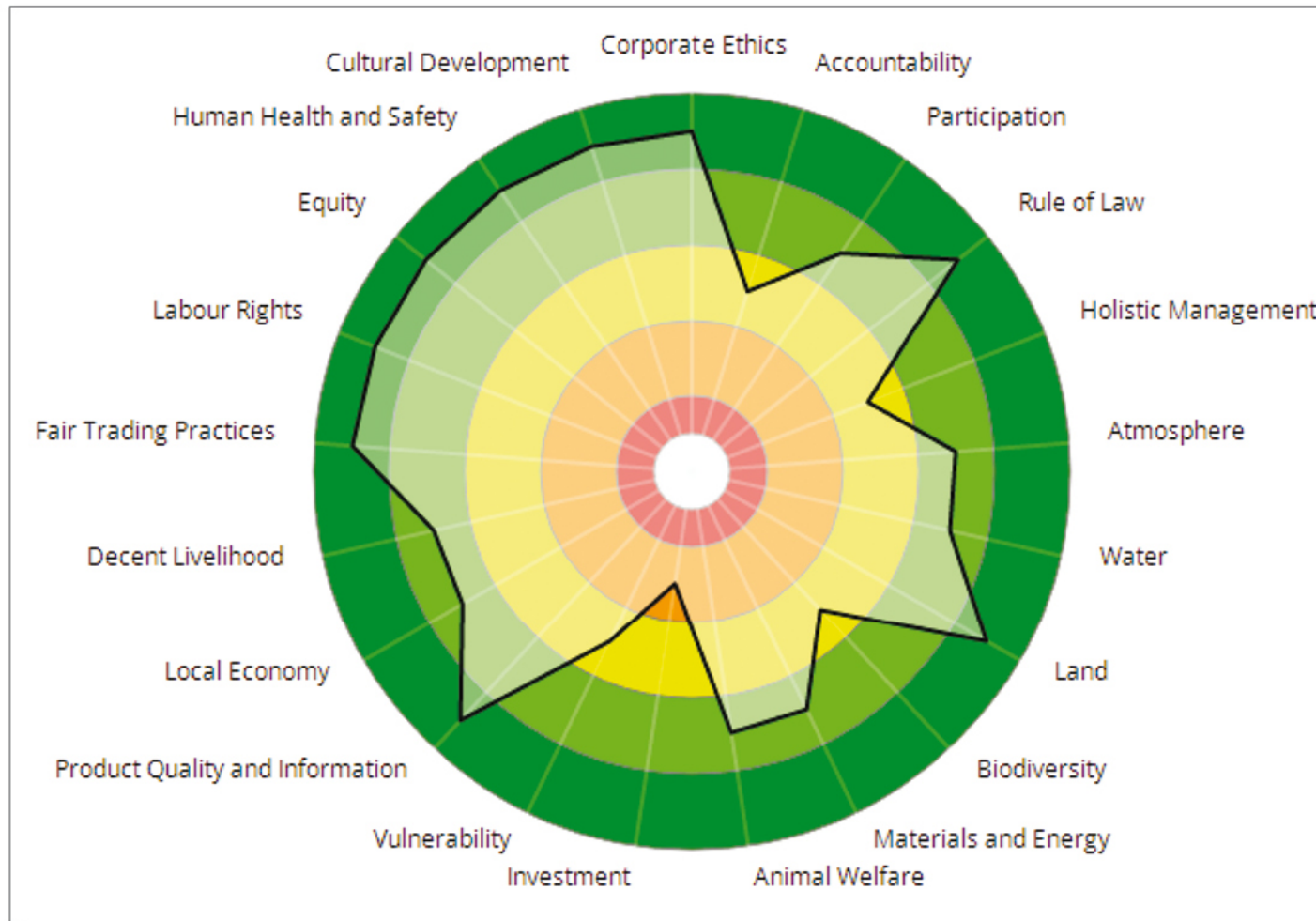
- >Monitoring project impacts
- >Gaps analysis
- >Action priority planning

For multiple purposes at different levels of the framework

(i.e. Sub-theme level = national level, Indicator level = supply chain level)



EXAMPLE OF PERFORMANCE REPORT OF AN ENTERPRISE



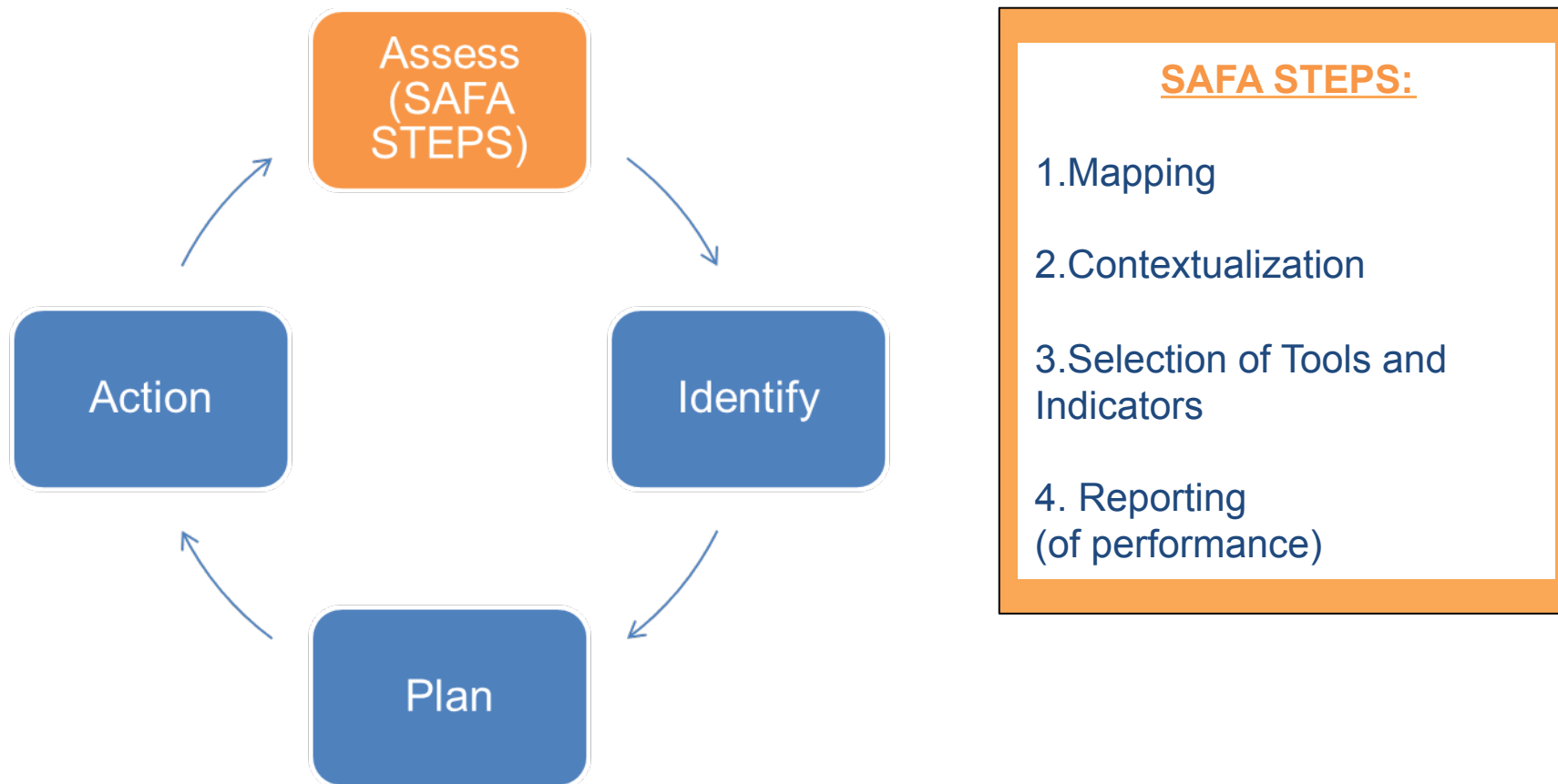
NOTE: SAFA is not an index but an impact assessment tool



SAFA SUSTAINABILITY ASSESSMENT OF FOOD AND AGRICULTURE SYSTEMS



6. SAFA PATHWAY TO SUSTAINABILITY



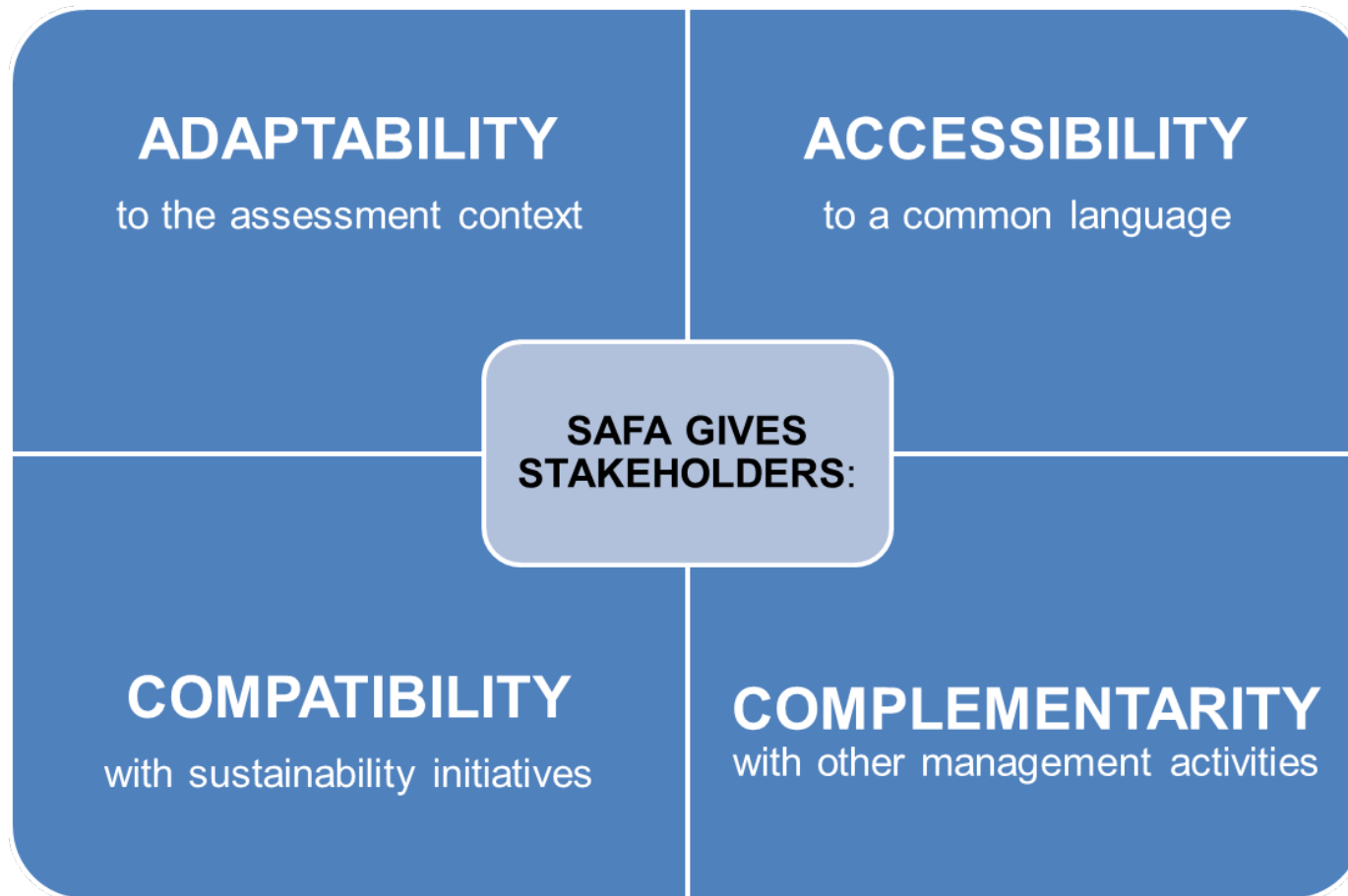
WHAT MATTERS FOR SAFA IS PERFORMANCE...

STAKEHOLDERS choose their own practices for achieving their goals



7. THE SAFA ADVANTAGE

SAFA: DEVELOPED BY STAKEHOLDERS FOR STAKEHOLDERS



8. FUTURE DEVELOPMENTS in 2014

SAFA Tool (finalized version)

- Beta testing until June 2014

SAFA Database

- Connect users with context info/other users

SAFA Small APP

- Specific for smallholders, essential indicators





SAFA

SUSTAINABILITY ASSESSMENT OF
FOOD AND AGRICULTURE SYSTEMS

Join the SAFA community of practitioners:

<http://www.fao.org/nr/sustainability/sustainability-assessments-safa>

SAFA.Secretariat@fao.org

